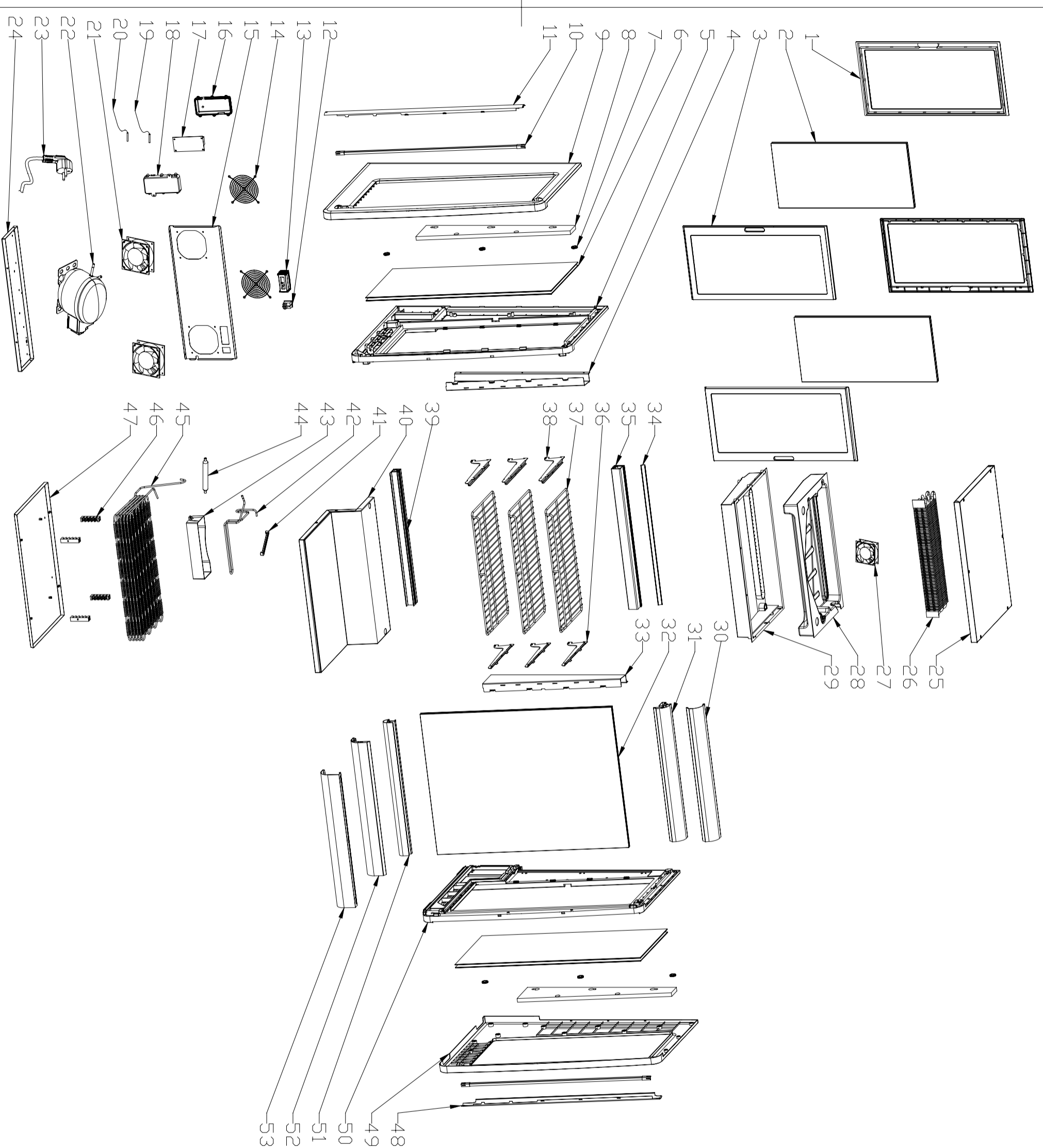


**CW-196 Black 115V/60Hz R290**



No.	Part code	Description	Qty	Unit price
1	B. 3. CW. 196. 020	Outer door frame	2	\$0.83
2	B. 7. CW. 196. 020	Door glass	2	\$9.92
3	B. 3. CW. 196. 010	Inner door frame	2	\$1.06
4	B. 2. CW. 146. 060	Left shelf supporter	1	\$4.80
5	B. 3. CW. 146. 010	Left board (inner)	1	\$5.68
6	B. 7. CW. 146. 020	Glass (side)	2	\$14.17
7	B. 3. CS. 104. 040	Decorating nut cover	6	\$0.02
8	B. 8. CW. 146. 070	Side panel PE cotton	2	\$1.28
9	B. 3. CW. 146. 030	Left board (outer)	1	\$4.04
10	B. 5. 16. 088	LED light (high voltage)	2	\$6.93
11	B. 3. CW. 146. 050	Left lamp shade	1	\$0.32
12	B. 5. 07. 002	Switch	1	\$0.71
13	B. 5. 03. 046	Display	1	\$4.68
14	B. 2. CW. 146. 170	Fan cover	2	\$1.38
15	B. 2. CW. 196. 060	Back cover	1	\$3.17
16	B. 3. CL. 238. 140	Controller cover	1	\$0.12
17	B. 5. 03. 024	Digital controller	1	\$8.08
18	B. 3. CL. 238. 150	Controller base	1	\$0.12
19	B. 5. 03. 003	Ambient temperature probe	1	\$0.68
20	B. 5. 03. 004	High temperature probe	1	\$0.57
21	B. 5. 02. 092	Fan motor	2	\$4.68
22	B. 5. 01. 024	Compressor	1	\$70.70
23	B. 5. 06. 026	Power line	1	\$2.23
24	B. 2. CW. 196. 050	Compressor board	1	\$2.71
25	B. 1. CW. 196. 030	Upper cover foaming base	1	\$9.44
26	B. 4. CW. 160. 020	Evaporator	1	\$15.87
27	B. 5. 02. 060 (A1)	Motor	1	\$5.38
28	B. 1. CW. 196. 020	Evaporator foaming base	1	\$4.47
29	B. 3. CW. 196. 030	Top cover board	1	\$4.88
30	B. 2. CW. 196. 020	Decorating for front upper pillar	1	\$1.17
31	B. 3. CW. 196. 070	Front upper pillar	1	\$1.71
32	B. 7. CW. 196. 010	Front glass	1	\$28.33
33	B. 2. CW. 146. 070	Right shelf supporter	1	\$4.80
34	B. 2. CW. 196. 030	Decorating for back upper pillar	1	\$0.38
35	B. 3. CW. 196. 080	Back upper pillar	1	\$1.27
36	B. 2. CW. 146. 090	Right board for shelf	3	\$1.40
37	B. 2. CW. 196. 090	Shelf	3	\$5.55
38	B. 2. CW. 146. 080	Left board for shelf	3	\$1.40
39	B. 3. CW. 196. 060	Back pillar	1	\$0.96
40	B. 1. CW. 196. 010	Bottom foaming tray assembly	1	\$15.18
41	B. 3. CW. 270R. 030	Pressure plate	1	\$0.01
42	B. 4. CW. 146. 030	High pressure tube	1	\$1.13
43	B. 3. CS. 103. 080	Water tray	1	\$0.24
44	B. 9. 05. 001	Dry-filter	1	\$0.72
45	B. 4. CW. 196. 010	Condenser	1	\$5.85
46	B. 3. CW. 146. 100	Condenser snap	4	\$0.02
47	B. 2. CW. 196. 040	Base	1	\$2.34
48	B. 3. CW. 146. 060	Right light cover	1	\$0.32
49	B. 3. CW. 146. 040	Right board (outer)	1	\$4.04
50	B. 3. CW. 146. 020	Right board (inside)	1	\$5.68
51	B. 3. CW. 196. 050	Front inside pillar	1	\$0.83
52	B. 3. CW. 196. 040	Front outer pillar	1	\$1.40
53	B. 2. CW. 196. 010	Decorating for front outer pillar	1	\$1.55