



**Zhejiang Sunmixer Sanitary Ware Co.,Ltd**  
 Add: Science & Technology Industrial Zone, Chumen, Yuhuan,  
 Zhejiang, China 317605

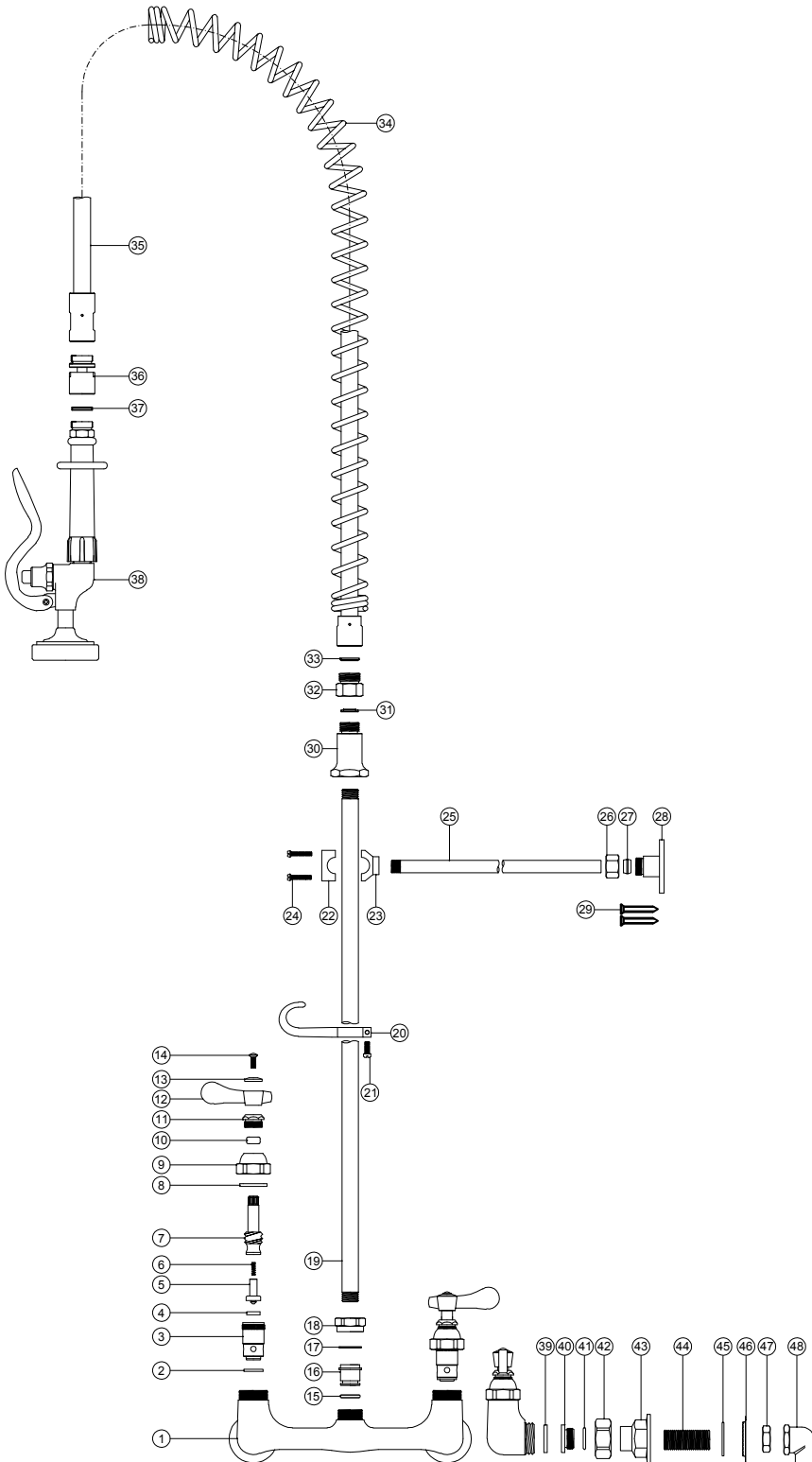
Tel: +86-576-87121119 Fax: +86-576-87121319 Http://www.pre-rinse.com

Model No.  
98002-1(WM-100-55)

Item No.  
01

Part Number Guide

		FITTINGS CODE	FITTINGS MATERIAL	QUANTITY
1	Body	20100023	BRASS	1
2	Washer	30400005	SANTOPRENE	2
3	Cartridge Body	31100061	BRASS	2
4	Washer	30400214	EPDM	2
5	Stem Of Check Valve	30100778	BRASS	2
6	Spring	30500018	STAINLESS STEEL304	2
7	Stem	31100058 31100060	BRASS	2
8	Washer	30400016	SANTOPRENE	2
9	Screw	30100217	BRASS	2
10	Washer	30400003	EPDM	2
11	Screw	30100184	BRASS	2
12	Lever Handle	30900044	ZINC	2
13	Index Button	30300085 30300086	POM	2
14	Screw	31700009	STAINLESS STEEL304	2
15	O-Ring	30400179	EPDM	1
16	Joint	30100037	STAINLESS STEEL304	1
17	Washer	30300040	POM	1
18	Screw	30100098	BRASS	1
19	Pipe	30200043	STAINLESS STEEL304	1
20	Finger Hook	30900057	ZINC	1
21	Screw	31700049	STAINLESS STEEL304	1
22	CLAMP	30900056	ZINC	1
23	CLAMP	30900055	ZINC	1
24	Screw	31700048	STAINLESS STEEL304	2
25	Pipe	30200045	STAINLESS STEEL304	1
26	Locknut	30100216	BRASS	1
27	Clamping Band	30100215	BRASS	1
28	Wall Base	30900058	ZINC	1
29	Screw	31700047	STAINLESS STEEL304	2
30	Joint	30200012	STAINLESS STEEL304	1
31	Washer	30400197	EPDM	1
32	Joint	30200011	STAINLESS STEEL304	1
33	Washer	30400225	EPDM	1
34	Spring	30500015	STAINLESS STEEL304	1
35	Hose	31200062	98-HSL1.23M	1
36	Joint	10103572	BRASS	1
37	Washer	30400161	EPDM	1
38	Spray Valve	10101282	M0098SV-124G-A	1
39	Washer	30400204	SANTOPRENE	2
40	Nut	30200008	STAINLESS STEEL304	2
41	O-Ring	30400066	EPDM	2
42	Nut	30100086	BRASS	2
43	Body	30100083	BRASS	2
44	Fitting	30100036	BRASS	2
45	Gasket	30400202	EPDM	2
46	Gasket	30200003	STAINLESS STEEL304	2
47	Screw	30100038	BRASS	2
48	Joint	30100042	BRASS	2



Products Specifications:

2022.06.14

Drawn: -

Checked: -

Approved: -

Scale:

Date: